

# Almost like being in love

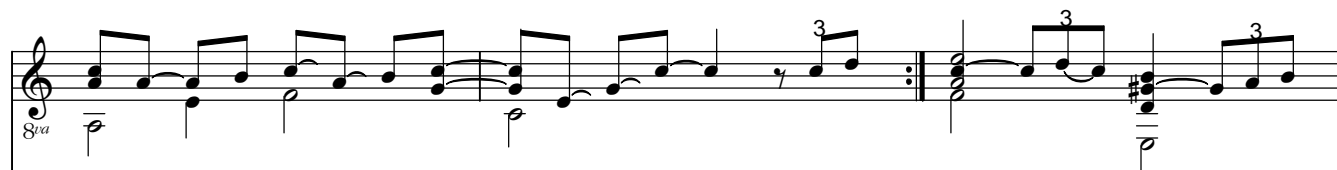
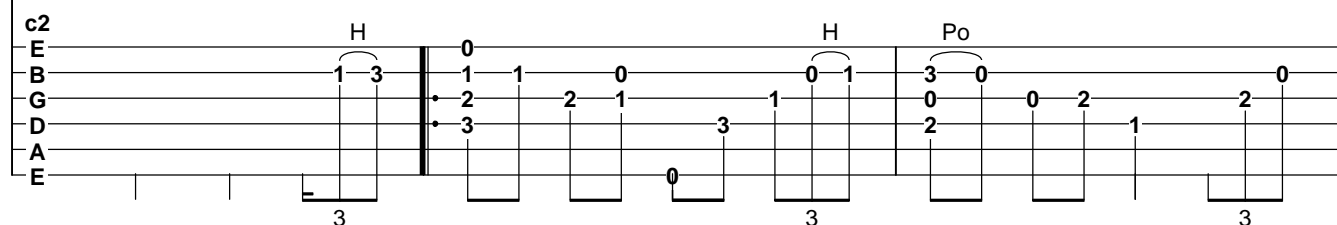
by Frederick Loewe 1947

Arrangement by Don Jones

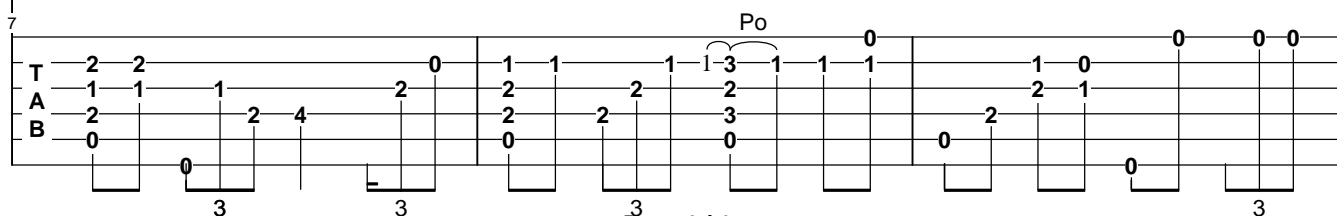
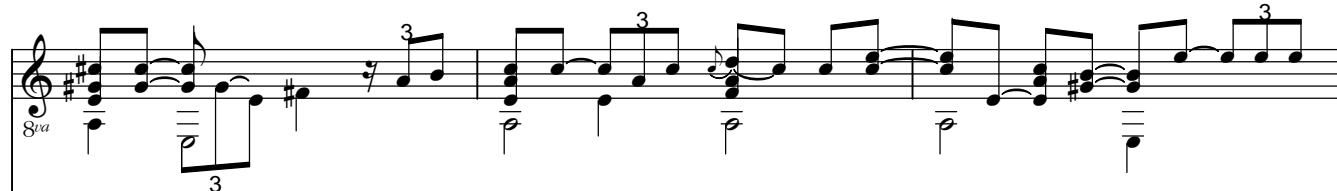
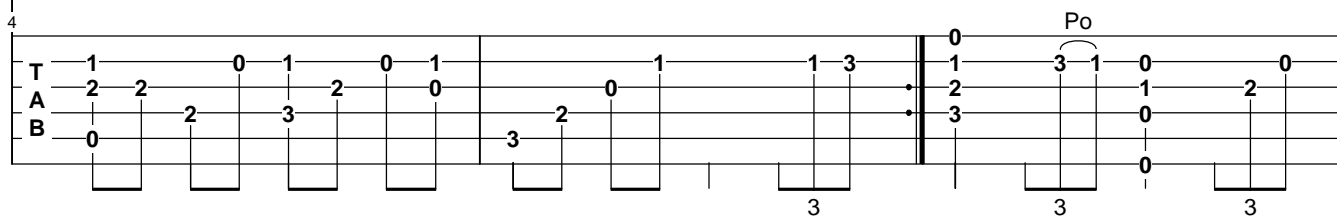
Transcribed by Bruce Mock 2024



**A**



**B**



8va

10

TAB

H

8va

13

TAB

8va

16

TAB

H

8va

3

3

3

3

**D**

19

T 0 1 1 3 0 3 1 0 0 2 2 1 1 2 0

A 3 2 0 1 3 3 1 2 0 1 1 1 2 4 2

B 3 2 0 1 3 3 1 2 0 1 1 1 2 4 2

3 3 3 3 3

Po

8va

3

3

3

3

22

T 1 2 2 2 1 1 3 1 1 1 0 0 0 1 1 0 0 1

A 2 2 2 2 2 2 2 2 2 2 2 2 2 2 2 2 2 2

B 0 0 0 0 0 0 0 0 0 0 0 0 0 0 0 0 0 0

3 3 3 3 3

Po

H

8va

3

3

3

3

25

T 3 0 0 2 2 0 1 2 0 1 1 2 0 1 1

A 0 0 0 2 2 0 2 2 2 2 2 2 2 2 2

B 2 2 2 1 2 2 2 2 2 2 2 2 2 2 2

3 3 3 3 3

The image displays a musical score for guitar and three-part vocal harmony. The top staff is a treble clef guitar line, marked with an *8va* (octave up) instruction. It contains three measures of music, each ending with a double bar line. The bottom section, starting at measure 28, shows a three-part vocal harmony for Tenor (T), Alto (A), and Bass (B) voices. The Tenor part uses a soprano clef, the Alto part an alto clef, and the Bass part a bass clef. Each voice part has a series of numbers (1, 2, 3, 0) indicating fingerings or positions. The Bass part includes a 'B' at the end, likely indicating a breath mark. The guitar part is represented by a series of vertical lines with numbers (1, 2, 3, 0) indicating fret positions.